

STANDARD Series - Strippers

Strippers for the 1/8" / 3 mm capacity "Standard" **Whistler** are furnished in (2) styles: steel capped polyurethane series 'PMS' and vanadium steel spring series 'MS'. Series 'PMS' is best for medium to high volume punching. Series 'MS' is recommended when only partial support of the stripper will be provided by the work piece material and for automated punching from coil. Strippers for the 1/4" / 6.35 mm capacity "Standard" **Whistler** are also furnished in (2) styles: steel capped polyurethane series 'PMSX' (through the '150' series only) and vanadium steel spring series 'MSX'. Series 'MSX' is recommended when only partial support of the stripper will be provided by the work piece material.



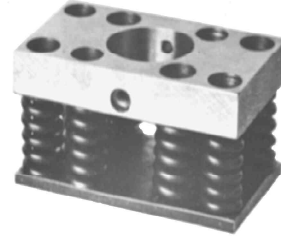
PMS



MS



PMSX



MSX

Example: Strippers

PMS 50 RECT .16 X .28

Designator
PMS
MS
PMSX
MSX

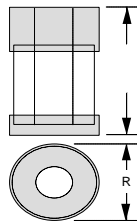
Series	Punch Body Dia
50	.500" (12.7 mm)
75	.750" (19.05 mm)
100	1.000" (25.4 mm)
150	1.500" (38.1 mm)
225	2.250" (57.15 mm)
300	3.000" (76.2 mm)
400	4.000" (101.6 mm)

Size	Ordering Information
ROUND	SPECIFY punch with .03" (.08 mm) added
OVAL	SPECIFY punch with .03" (.08 mm) added to each
SQUARE	SPECIFY punch with .03" (.08 mm) added to each
RECTANGLE	SPECIFY punch with .03" (.08 mm) added to each
CUSTOM	SEE PG 17

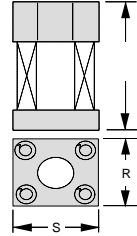
Shape	
SD	SPOT DRILLED for drilling to size in your facility
RD	ROUND
OVAL	OVAL
SQ	SQUARE
RECT	RECTANGLE
CUSTOM	SEE PG 17

CATALOG NUMBER	R	S
PMS-50	1.18" (30 mm)	
PMS-75	1.63" (41.3 mm)	
PMS-100	2.00" (50.8 mm)	
PMS-150	2.75" (69.9 mm)	
PMS-225	4.00" (101.6 mm)	
PMS-300	4.62" (117.3 mm)	
MS-50	1.18" (30 mm)	1.43" (36.51 mm)
MS-75	2.00" (50.8 mm)	2.00" (50.8 mm)
MS-100	2.12" (53.8 mm)	2.12" (53.8 mm)
MS-150	2.50" (63.5 mm)	2.50" (63.5 mm)
MS-225	4.00" (101.6 mm)	
MS-300	4.75" (120.7 mm)	

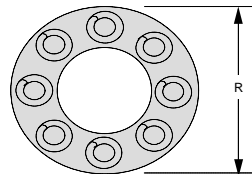
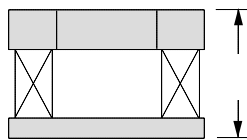
PMS, PMSX



MS, MSX



MS, MSX



CATALOG NUMBER	R	S
PMSX-50	1.37" (34.9 mm)	
PMSX-75	2.25" (57.1 mm)	
PMSX-100	2.75" (69.8 mm)	
PMSX-150	3.37" (85.7 mm)	
MSX-50	1.25" (31.7 mm)	3.00" (76.2 mm)
MS-75-X	2.00" (50.8 mm)	2.00" (50.8 mm)
MS-100-X	2.25" (57.1 mm)	3.87" (98.4 mm)
MS-150-X	2.50" (63.5 mm)	4.25" (107.9 mm)
MS-225-X	4.00" (101.6 mm)	
MS-300-X	4.75" (120.6 mm)	
MS-400-X	5.75" (146 mm)	

CAUTION

Whistler MAGNA DIE operates at 6.35" (161.3 mm) shut height. Over compression will cause fracturing and premature failure of spring and polyurethane strippers.